



# SpillSens Digital Float Sensor



MONITORING ASSETS, DELIVERING DATA, BRINGING CONTROL

# SpillSens

## The multi-alarm digital float sensor delivering early warnings of small sewer and customer-side blockages and overflows

Installed at a critical height in a chamber, SpillSens uses digital positioning technology to **monitor sewer levels** constantly and effectively.

Programmed with three alert levels, SpillSens indicates green when conditions are normal, amber when levels are rising and red when critical levels are reached.

Ideal for **Incident Prevention Monitoring**, SpillSens supports compliance with **Outcome Delivery Incentives** and helps to protect the environment by **reducing pollution** incidents.

**ATEX (Zone 0) certified**, SpillSens is dependable and, when paired with our ATEX Battery Pack, can deliver **accelerated sample rates** and **increased dial-in frequency** whilst maintaining a **five-year battery life**.



### Key Features and Benefits

- three levels of alert (green, amber and red), based on the angle of the sensor
- designed to have no moving parts, unlike traditional steel ball and micro-switch sensors
- intrinsically safe; ATEX-certified for use in Zone 0 hazardous areas
- dedicated online portal (SpillGuard) for monitoring and fleet management
- highly compatible; works in conjunction with IS Log and other FCS loggers

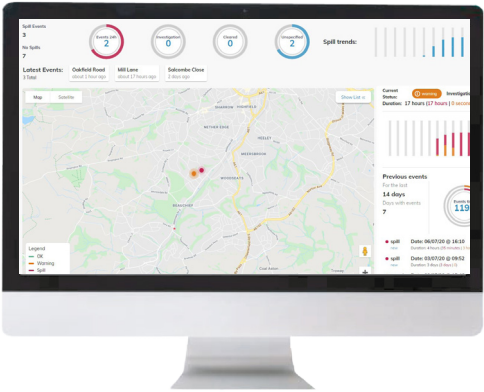
## SpillGuard

### The secure online portal for the dedicated monitoring and fleet management of the SpillSens multi-level alert system

Designed specifically for use with SpillSens, SpillGuard provides secure access to the generated data for effective **fleet management** and **network monitoring**.

Using **Google Maps**, SpillGuard provides a detailed map interface which colour codes the status of each individual installation. The three alert levels (green, amber and red) can be supplemented with user-assigned statuses, such as “site under investigation” or “alert cleared”.

SpillGuard can display general **site statistics** and **trends**, as well as specific site details. Individual users and reports are managed using an advanced platform which includes the option to forward alarm messages via e-mail or SMS.



## SpillSens Digital Float Sensor

**SpillSens** is an easy to install, low maintenance digital float sensor that delivers early warnings of small sewer and customer-side blockages and overflows. Each SpillSens sensor is connected to a data logger. When the tilt level reaches a specified angle, the logger uses NBloT cellular telemetry to transmit alert messages to **SpillGuard**, our bespoke web portal for SpillSens



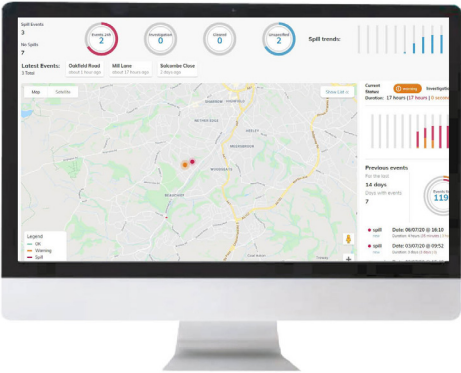
### SpillSens Digital Float Sensor

- Intrinsically safe
- Three alert levels
- No moving components
- Compatible with multiple loggers



### IS Log ATEX Certified Data Logger

- NBloT cellular telemetry
- Multi-application compatibility
- Intrinsically safe
- Wireless programming
- Easy software integration



### SpillGuard Online Data Portal

- Real-time alerts
- Three alert levels
- Graphical map view
- Detailed site view
- Data security features

**We are experienced and respected manufacturers of monitoring and telemetry equipment for water and wastewater networks, together with telemetry AMR and facilities optimization products.**



## Clean Water Network Monitoring

With over 30 years in the water industry, FCS is skilled at addressing the challenges of water network monitoring. With increased pressure on water globally, we can solve the problems of effective water network management, providing data on performance and enabling effective network management.

## Waste Water Network Monitoring

Control of waste water networks is a key public health challenge. Effective monitoring of waste water networks reduces both frequency and impact of pollution events. Permanent installation of remote monitoring equipment helps to alert network operators to immediate problem sites.

## Automated Meter Reading

Accurate and consistent data is the foundation for effectively controlling energy usage and reducing waste. AMR delivers precise and timely consumption data for investigation and analysis of energy usage as well as exact billing.

## Facilities Management

FCS has pioneered the development of wireless monitoring solutions for fixed network deployment. These can be combined with a variety of sensors, providing our partners with 'near real-time' data that they need to help their customers to eliminate waste, cut costs and reduce carbon emissions.



A Halma company

All images, text and designs are protected by international and UK copyright law and remain the property of HWM. It is against the law to copy or use any of the content from HWM website or literature without the written consent of HWM. HWM Ltd. reserve the right to vary the specification.

### Fluid Conservation Systems

1960 Old Gatesburg Road, Ste #150,  
State College, PA 16803  
United States

Tel: +1 800 531 5465  
Email: [sales@fluidconservation.com](mailto:sales@fluidconservation.com)  
Web: [www.fluidconservation.com](http://www.fluidconservation.com)

MONITORING ASSETS, DELIVERING DATA, BRINGING CONTROL

[www.fluidconservation.com](http://www.fluidconservation.com)